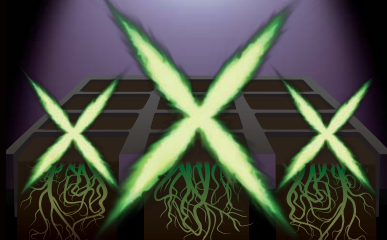


MX Clone Gel is a breakthrough in rooting technology. It's a rooting gel that provides the necessary ingredients to generate roots from stem or leaf cuttings. This unique gel seals the cutting and has antibacterial ingredients to prevent bacteria and fungus from entering the cutting.



4 Fluid Ounces (118 mL)



Directions:
Take cutting and dip into MX Clone Gel to the desired rooting depth. Place treated cutting into suitable rooting medium or propagator. Mist cuttings with water once or twice a day.

Harmful if swallowed. Avoid contact with skin, eyes, or clothing. Immediately flush eyes or skin with plenty of water. Not intended for use on food crops. Keep out of the reach of children.



MX CLONE GEL

X-Nutrients
5726C Sonoma Dr.
Pleasanton, CA 94566
www.xnutrients.com